



ECONOMIC INDICATOR

A QUARTERLY REPORT

OCTOBER - DECEMBER 2008



DEPARTMENT OF COMMERCE
COMMONWEALTH OF THE NORTHERN MARIANA ISLANDS
CALLER BOX 10007 CK
SAIPAN, MP. 96950
TEL NO: (670) 664 - 3000

MESSAGE FROM THE SECRETARY

We are pleased to present the Fourth Quarter issue of the Economic Indicator, depicting the social and economic conditions of the Commonwealth of the Northern Mariana Islands (CNMI), covering October through December 2008.

This publication is made possible by data researched and tabulated under the Central Statistics Division, Department of Commerce, and with contributions from other CNMI Government departments and agencies, as well as inputs from private organizations.

Other reports published by the Department of Commerce may be accessed at:

www.commerce.gov.mp/new

We are committed to providing you, the public, business community, and leaders of the CNMI this quarterly issue for whatever purpose it may serve you. Moreover, we are grateful to all those who contributed to the successful compilation of this report and look forward to working closely together to ensure that future issues are published on time. We invite and welcome any suggestions or comments that may improve our quarterly publications. Please send your thoughts to our office.

Hafa Adai,

MICHAEL J. ADA
Secretary of Commerce

Table of Contents

TABLE 1 - BANKING ACTIVITY	4
FIGURE 1.1 - BANKING ACTIVITY - DEPOSITS	4
FIGURE 1.2 - BANKING ACTIVITY - LOANS	4
TABLE 2 - REMITTANCE	5
FIGURE 2 - REMITTANCE	5
TABLE 3 - AUTO SALES	5
FIGURE 3 - AUTO SALES	5
TABLE 4 - VISITOR ARRIVAL	6
FIGURE 4 - VISITOR ARRIVAL	6
TABLE 5 - AVERAGE CNMI HOTEL DAILY RATE	7
FIGURE 5 - AVERAGE CNMI HOTEL DAILY RATE	7
TABLE 6 - AVERAGE CNMI HOTEL OCCUPANCY RATE	7
FIGURE 6 - AVERAGE CNMI HOTEL OCCUPANCY RATE	7
TABLE 7 - BUSINESS GROSS REVENUE (BGR) REPORTED	8
FIGURE 7 - BUSINESS GROSS REVENUE (BGR) REPORTED	8
TABLE 8 - GOVERNMENT EXPENDITURES	8
FIGURE 8 - GOVERNMENT EXPENDITURES	8
TABLE 9 - GENERAL FUND REVENUE (TAXES AND FEES COLLECTED)	9
FIGURE 9 - GENERAL FUND REVENUE (TAXES AND FEES COLLECTED)	9
TABLE 10 - IMPORTS	10
FIGURE 10 - IMPORTS (IN THOUSANDS)	10
TABLE 11 - EXPORTS	11
FIGURE 11 - EXPORTS (IN MILLIONS)	11
TABLE 12 - TELEPHONE LINES	11
FIGURE 12.1 - COMMERCIAL PHONE LINES	12
FIGURE 12.2 - RESIDENTIAL PHONE LINES	12
FIGURE 12.3 - COMMERCIAL & RESIDENTIAL PHONE LINES (TOTALS)	12
TABLE 13 - BUILDING PERMITS	13
FIGURE 13.1 - NUMBER OF BUILDING PERMITS ISSUED	13
FIGURE 13.2 - VALUES OF BUILDING PERMITS ISSUED (IN MILLIONS)	13
TABLE 14 - CNMI CONSUMER PRICE INDEX (CPI)	14
TABLE 15 - CNMI CONSUMER PRICE FOR 9 SELECTED GROUPS	14
TABLE 16 - HISTORICAL CPIs FOR SELECTED GROUPS	15
LIST OF CONTRIBUTORS	16

TABLE 1 - BANKING ACTIVITY

Banking Activity (US \$ Millions)	Year				Quarter							
	2004	2005	2006	2007	2007.1	2007.2	2007.3	2007.4	2008.1	2008.2	2008.3	2008.4
Total Deposits	559.70	523.70	517.90	531.20	526.57	511.90	514.26	531.20	515.53	478.85	446.34	450.60
Total Demand (Checking)	177.60	178.60	143.10	156.85	156.02	142.80	143.39	156.85	152.14	144.68	140.24	135.56
Total Savings	224.90	175.40	159.70	143.25	152.29	149.52	141.85	143.25	133.63	131.00	114.10	117.86
Total TCDs*	157.20	169.70	215.10	231.10	218.26	219.59	229.02	231.10	229.76	203.17	192.00	197.18
Total Loans	203.80	193.80	180.80	161.61	174.14	170.96	167.58	161.61	156.72	149.14	144.65	141.25
Consumer	82.70	81.50	74.10	65.30	71.71	71.05	68.95	65.30	62.34	60.07	58.16	56.06
Real Estate	45.80	47.30	45.90	42.33	45.32	43.87	42.74	42.33	41.75	40.99	40.62	39.55
Commercial	75.30	65.00	60.80	53.97	57.10	56.04	55.89	53.97	52.64	48.08	45.88	45.64
Loan to Deposit Ratio	36.4%	37.0%	34.9%	30.4%	33.1%	33.4%	32.6%	30.4%	30.4%	31.1%	32.4%	31.3%

Source: Banking Section, Department of Commerce
*Includes Cashiers Checks

FIGURE 1.1 - BANKING ACTIVITY - DEPOSITS

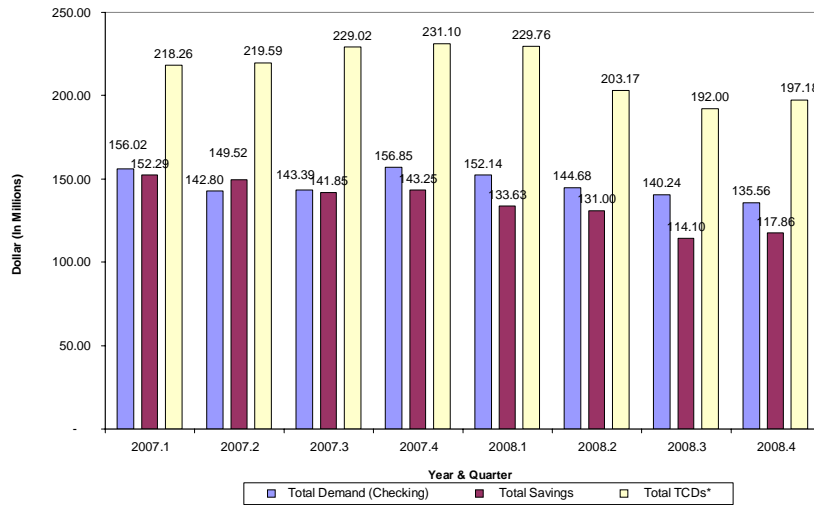


FIGURE 1.2 - BANKING ACTIVITY - LOANS

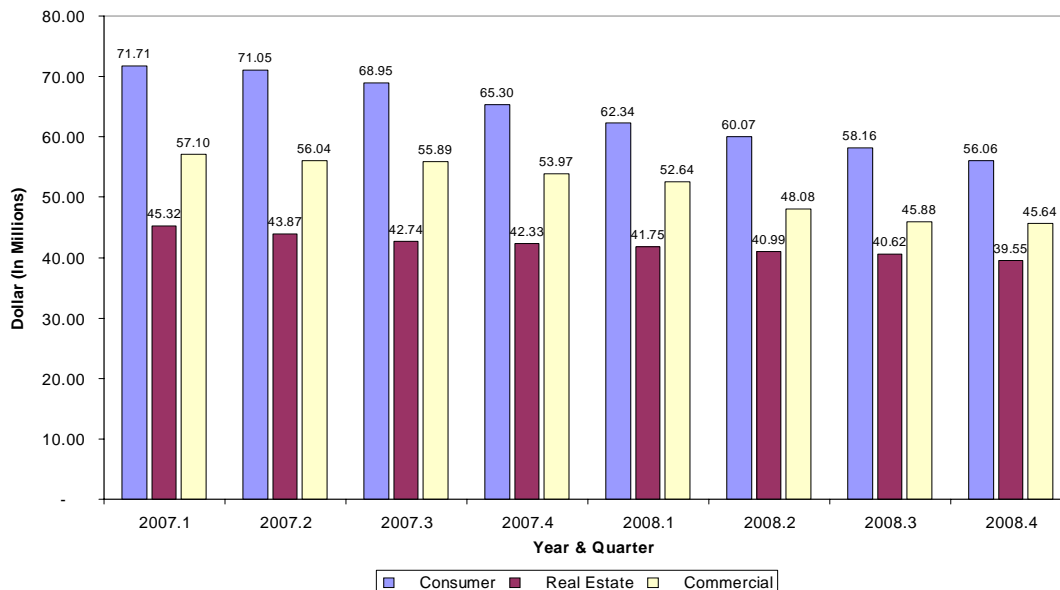


TABLE 2 - REMITTANCE

Remittances	Year				Quarter							
	2004	2005	2006	2007	2007.1*	2007.2	2007.3	2007.4	2008.1	2008.2	2008.3	2008.4
Remittances (US \$ Millions)	94.6	112.6	102.2	93.6	25.4	22.0	21.9	24.3	20.8	19.7	19.1	17.2
% Change to Previous Year/Quarter	17.5%	19.0%	-9.2%	-8.4%	1.4%	-9.9%	-12.8%	-12.0%	-18.1%	-10.3%	-13.0%	-29.3%
% Change to Previous Quarter					-7.8%	-13.6%	-0.4%	10.9%	-14.2%	-5.4%	-3.3%	-9.9%

Source: Banking Section, Department of Commerce
 *Note: Revisions to 2007.1 Data

FIGURE 2 - REMITTANCE

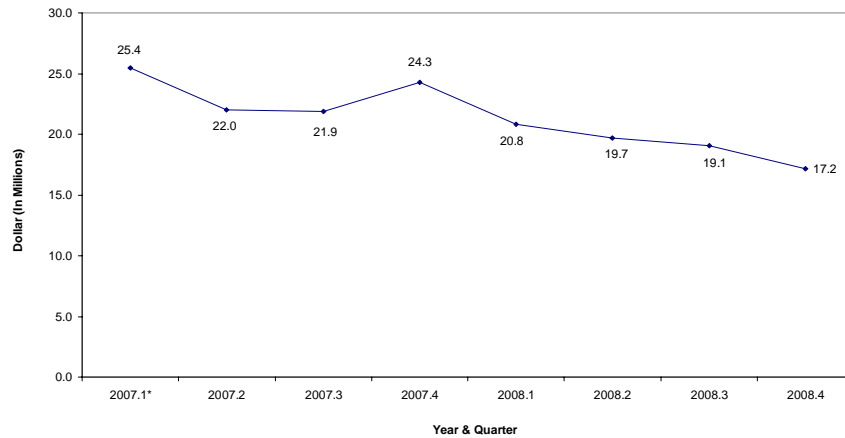


TABLE 3 - AUTO SALES

Auto Sales	Year				Quarter							
	2004	2005	2006	2007	2007.1	2007.2	2007.3	2007.4	2008.1	2008.2	2008.3	2008.4
Total Cars Sold	1,992	1,885	1,352	1,101	275	261	288	277	300	226	252	188
% Change to Previous Year/Quarter	17.7%	-5.4%	-28.2%	-18.6%	-33.1%	-25.9%	-14.3%	9.5%	9.1%	-13.4%	-12.5%	-32.1%
% Change to Previous Quarter					8.7%	-5.1%	10.3%	-3.8%	8.3%	-24.7%	11.5%	-25.4%
New Cars	1,612	1,555	1,000	632	181	157	157	137	190	155	155	97
Used Cars	380	330	352	469	94	104	131	140	110	71	97	91

Source: Commonwealth Auto Dealer's Association (CADA)

FIGURE 3 - AUTO SALES

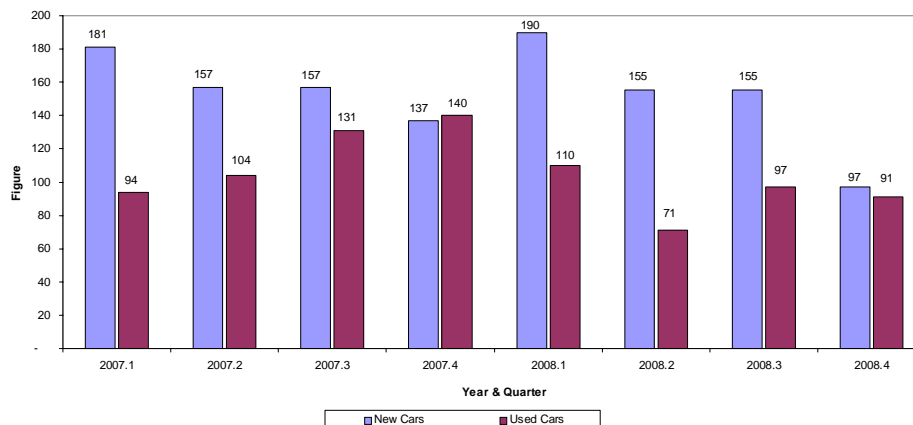


TABLE 4 - VISITOR ARRIVAL

Visitor Arrivals	Year				Quarter							
	2004	2005	2006	2007	2007.1	2007.2	2007.3	2007.4	2008.1	2008.2	2008.3	2008.4
Total Visitors	589,224	491,701	435,494	389,261	109,643	85,368	99,629	94,621	110,690	93,939	97,160	95,482
% Change to Previous Year/Quarter	28.24%	-16.55%	-11.43%	-10.62%	-2.5%	-21.5%	-12.3%	-6.1%	1.0%	10.0%	-2.5%	0.9%
% Change to Previous Quarter					8.9%	-22.1%	16.7%	-5.0%	17.0%	-15.1%	3.4%	-1.7%
Japan	382,478	351,739	269,780	200,109	62,662	45,501	49,014	42,932	57,099	48,080	53,871	54,249
Korea	68,282	69,952	82,891	108,321	23,945	22,900	30,157	31,319	29,512	28,284	27,595	25,725
U.S. & Guam	36,739	37,666	24,579	27,849	6,468	7,210	6,565	7,606	8,800	8,159	7,634	6,471
China/Hongkong		23,410	38,313	40,331	12,750	6,141	11,288	10,152	11,667	4,391	4,885	5,935
Philippines		2,381	4,320	5,025	1,592	1,840	1,033	560	370	610	420	380
Russia			1,675	3,671	974	743	860	1,094	1,748	1,588	1,747	1,731
Taiwan		2,085	314	445	124	227	41	53	87	72	66	59
Others Areas*	101,725	4,468	6,178	3,510	1,128	806	671	905	1,407	2,755	942	932

Source: Marianas Visitors Authority (MVA)
 *Note: 2003 - 2005 includes China/Hong Kong, Philippines, Russia, & Taiwan

FIGURE 4 - VISITOR ARRIVAL

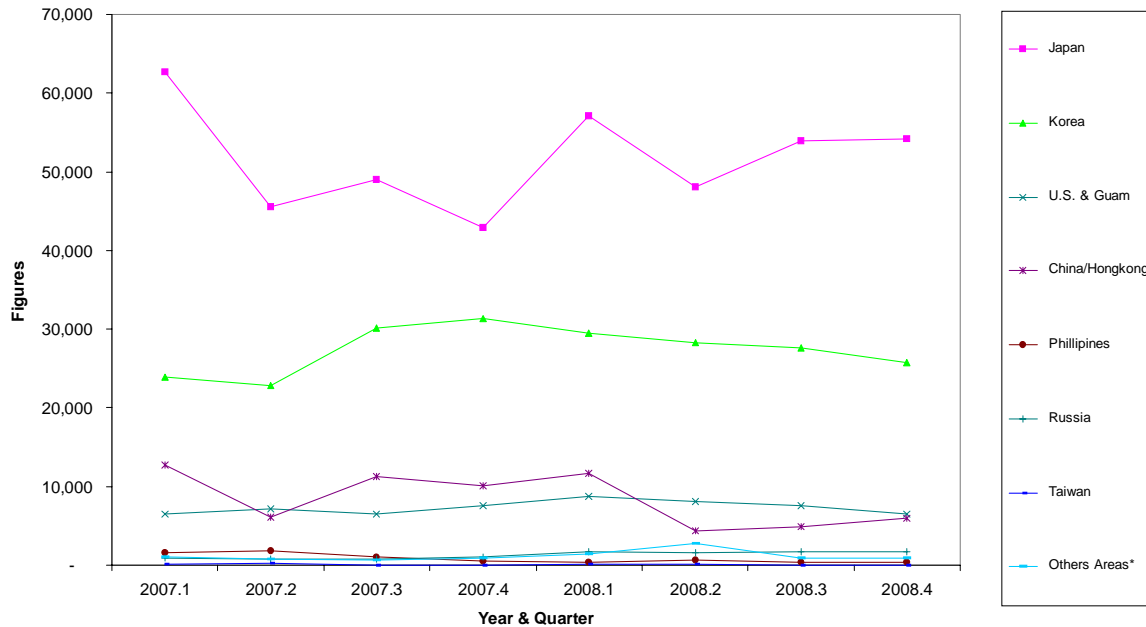


TABLE 5 - AVERAGE CNMI HOTEL DAILY RATE

Hotel Daily Rates	Year				Quarter							
	2004	2005	2006	2007	2007.1	2007.2	2007.3	2007.4	2008.1	2008.2	2008.3	2008.4
Average Daily Rates (\$)	80.00	83.00	90.00	92.12	95.83	85.70	97.32	89.65	101.10	92.80	101.86	95.19
% Change to Previous Year/Quarter	2.6%	3.8%	8.4%	2.4%	5.3%	2.0%	0.3%	1.9%	5.5%	8.3%	4.7%	6.2%
% Change to Previous Quarter					8.9%	-10.6%	13.6%	-7.9%	12.8%	-8.2%	9.8%	-6.5%

Source: Hotel Association of the Northern Mariana Islands (HANMI). Data from HANMI members only.
 Note: All Percents are Rounded to the Nearest Tenth

FIGURE 5 - AVERAGE CNMI HOTEL DAILY RATE

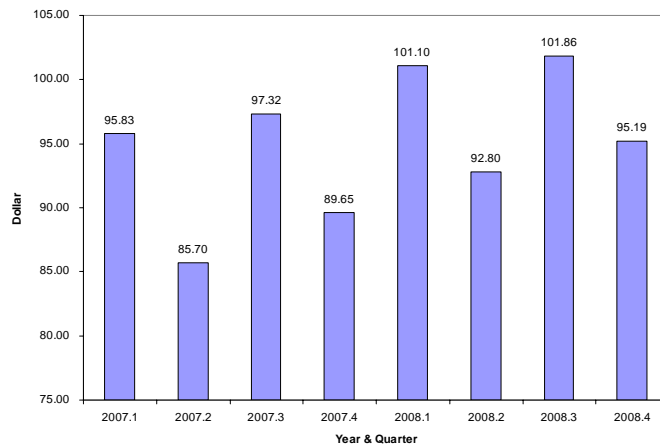


TABLE 6 - AVERAGE CNMI HOTEL OCCUPANCY RATE

Hotel Occupancy Rate	Year				Quarter							
	2004	2005	2006	2007	2007.1	2007.2	2007.3	2007.4	2008.1	2008.2	2008.3	2008.4
Hotel Occupancy Rate (%)	72.0%	70.0%	62.0%	58.9%	69.8%	52.4%	57.3%	56.1%	70.6%	57.0%	59.2%	60.8%
% Change to Previous Year/Quarter	10.8%	-3%	-11%	-5%	16.3%	-15.5%	-11.9%	-8.0%	1.2%	8.8%	3.4%	8.3%
% Change to Previous Quarter					14.4%	-24.9%	9.3%	-2.0%	25.9%	-19.3%	3.8%	2.7%

Source: Hotel Association of the Northern Mariana Islands (HANMI). Data from HANMI members only.
 Note: All Percents are Rounded to the Nearest Tenth

FIGURE 6 - AVERAGE CNMI HOTEL OCCUPANCY RATE

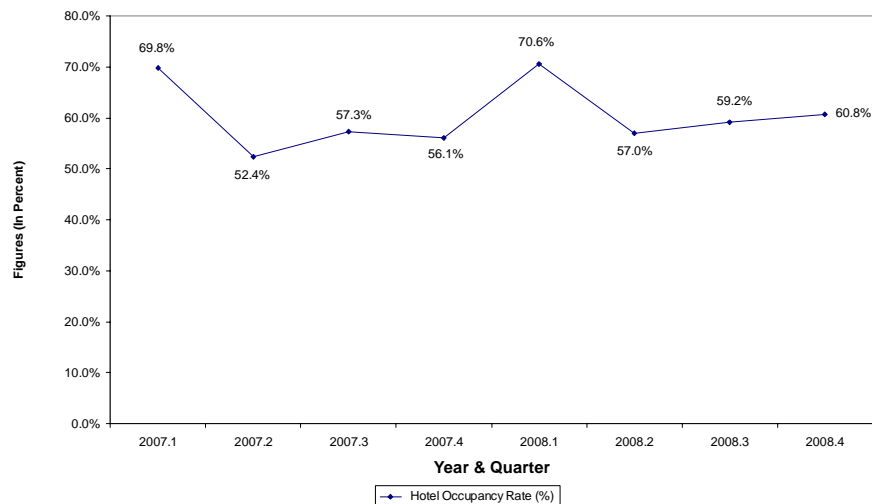


TABLE 7 - BUSINESS GROSS REVENUE (BGR) REPORTED

Business Gross Revenue (BGR)	Year				Quarter							
	2004	2005	2006	2007	2007.1	2007.2	2007.3	2007.4	2008.1	2008.2	2008.3	2008.4
BGR Reported* (US \$ Millions)	2,034	2,020	1,829	1,672	454.40	424.60	393.00	399.56	416.62	423.96	427.58	420.42
% Change to Previous Year/Quarter	6.3%	-0.7%	-9.5%	-8.6%	-9.7%	-5.3%	-14.2%	-4.8%	-8.3%	-0.2%	8.8%	5.2%
% Change to Previous Quarter					8.3%	-6.6%	-7.4%	1.7%	4.3%	1.8%	0.9%	-1.7%

Source: Department of Finance

* Estimated based on BGRT and other income tax collections.

FIGURE 7 - BUSINESS GROSS REVENUE (BGR) REPORTED

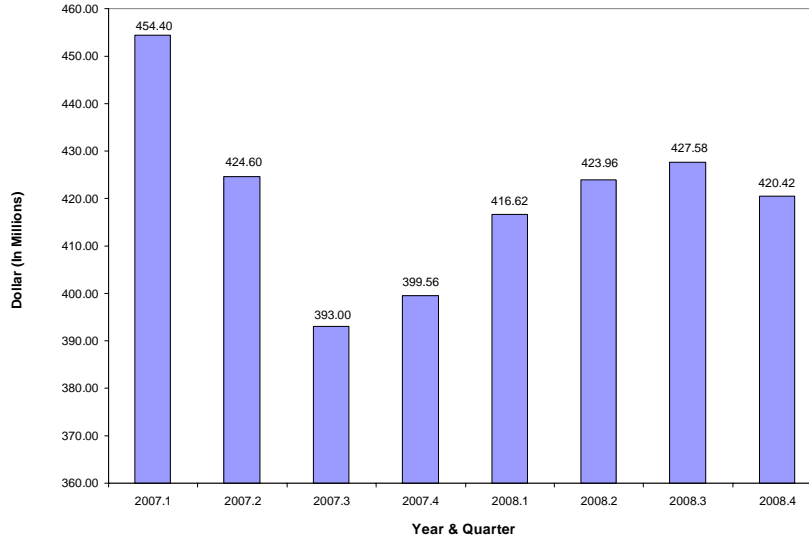


TABLE 8 - GOVERNMENT EXPENDITURES

General Expenditures	Year				Quarter							
	2004	2005	2006	2007	2007.1	2007.2	2007.3	2007.4	2008.1	2008.2	2008.3	2008.4
Government Expenditures (US \$ Millions)*	215.40	224.10	195.60	162.67	42.29	38.04	40.19	42.15	43.88	46.44	38.12	43.79
% Change to Previous Year/Quarter	0.70%	4.04%	-12.7%	-12.7%	-21.5%	-20.4%	-21.8%	-0.8%	3.8%	22.1%	-5.2%	3.9%
% Change to Previous Quarter					-0.5%	-10.0%	5.7%	4.9%	4.1%	5.8%	-17.9%	14.9%

Source: Department of Finance

*Note: FY07 - 08 expenditures do not include suspended employer retirement contributions

FIGURE 8 - GOVERNMENT EXPENDITURES

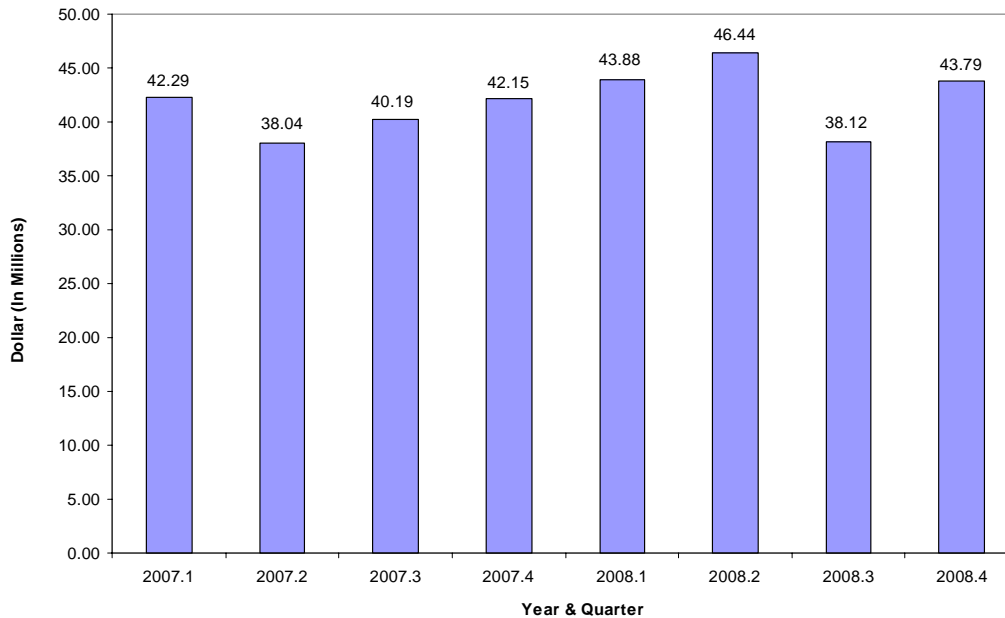


TABLE 9 - GENERAL FUND REVENUE (TAXES AND FEES COLLECTED)

General Fund Revenue (Taxes and Fees Collected)	Year				Quarter							
	2004	2005	2006	2007	2007.1	2007.2	2007.3	2007.4	2008.1	2008.2	2008.3	2008.4
Total (US \$ Millions)	217.90	210.29	192.03	163.03	43.860	39.540	44.250	35.382	40.016	39.495	47.370	35.877
% Change to Previous Year/Quarter	3.87%	-3.49%	-8.68%	-15%	-9.9%	-15.7%	-21.1%	-12.3%	-8.8%	-0.1%	7.1%	1.4%
% Change to Previous Quarter					8.7%	-9.8%	11.9%	-20.0%	13.1%	-1.3%	19.9%	-24.3%
Business Gross Receipt	54.48	58.29	54.05	49.04	13.750	12.790	10.520	11.980	12.309	12.405	13.387	13.682
Wage & Salary	34.97	32.68	28.58	26.20	6.550	6.380	6.900	6.366	6.288	6.808	6.245	5.707
NMTIT Personal (Chp. 7) / Corp. Income	11.23	10.01	15.05	8.34	2.420	2.060	2.230	1.632	2.234	1.985	7.047	1.632
Excise	24.43	23.88	24.41	20.58	5.470	5.340	5.090	4.676	5.253	5.082	4.973	4.407
Hotel Occupancy	5.96	6.50	5.54	4.93	1.580	1.120	1.290	0.943	1.676	1.221	1.773	0.890
Fuel/Container/Bar	9.91	10.24	7.25	6.82	1.310	2.080	2.060	1.366	1.422	1.372	2.337	2.152
Garment Certification	30.56	24.08	18.06	11.38	3.770	2.840	2.650	2.120	1.759	0.934	0.581	0.360
*Fees, Charges, & Other Revenues	46.36	44.61	33.81	39.26	9.930	7.870	14.370	7.089	8.830	7.180	10.643	6.518
Transfers from Other Funds									1.242	3.461	1.200	1.382
Revenue Transfer to Other Funds				-3.51	-0.920	-0.940	-0.860	-0.790	-0.997	-0.953	-0.816	-0.853

Source: Department of Finance
 Note: FY07 Expenditures do not include suspended employer retirement contributions
 *Note: Also Includes "Transfers From Other Funds" for Years 2004 - 2007 & Quarters 2007.1 - 2007.4

FIGURE 9 - GENERAL FUND REVENUE (TAXES AND FEES COLLECTED)

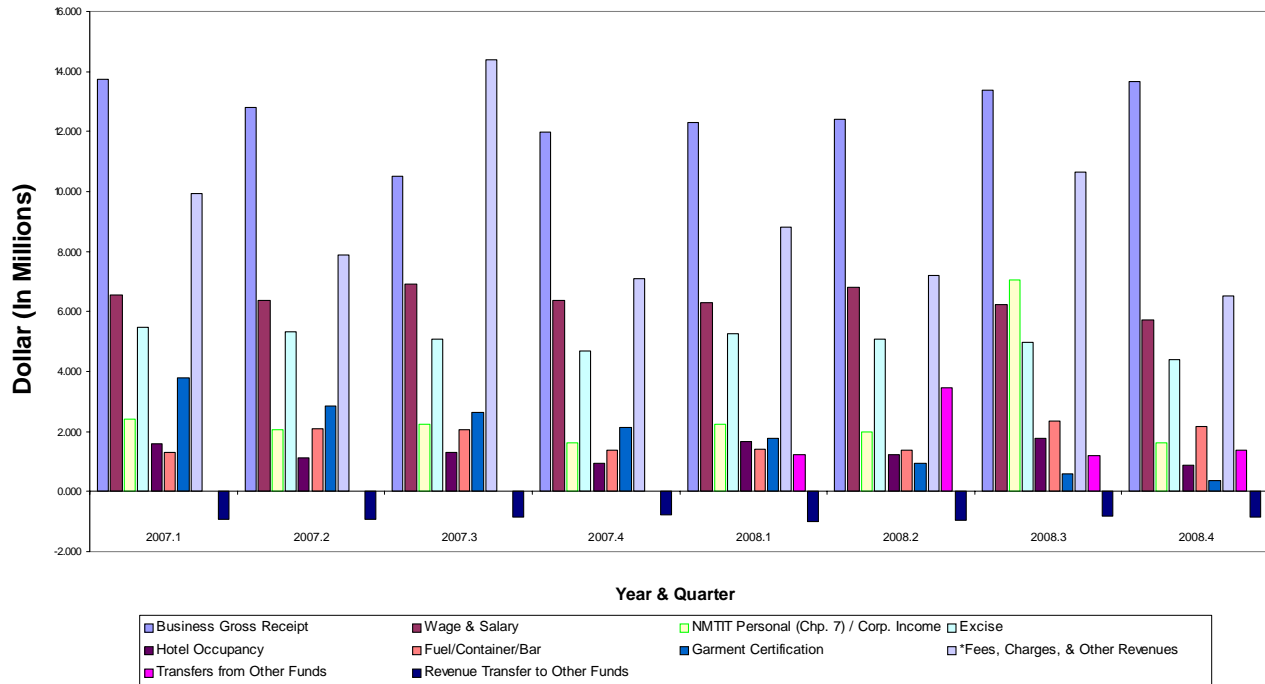


TABLE 10 - IMPORTS

Imports	Year				Quarter							
	2004	2005	2006	2007	2007.1**	2007.2**	2007.3	2007.4	2008.1	2008.2	2008.3	2008.4
Total Tonnage (In Thousands)	666.40	605.50	540.20	439.44	114.44	108.99	113.66	102.34	93.46	99.47	89.27	74.15
Petroleum, Oil, Lubricants (P.O.L.)	202.40	214.20	203.40	175.99	44.68	40.43	50.63	40.24	38.45	44.90	33.66	28.30
Cement	22.80	19.20	16.80	27.15	5.81	5.50	9.67	6.18	5.37	7.44	5.67	2.83
Garment	157.70	112.90	91.50	51.64	14.51	14.62	12.67	9.83	5.69	4.36	1.89	0.54
Food Items			62.30	53.53	13.89	13.33	12.45	13.85	12.68	13.23	11.64	11.81
Construction Materials			16.60	14.90	4.51	3.63	3.82	2.93	2.80	5.94	5.58	2.54
Beverages			23.50	20.66	5.18	5.14	5.15	5.19	5.11	4.90	5.15	5.15
Others*	283.50	259.20	125.90	95.57	25.86	26.34	19.26	24.11	23.36	18.70	25.70	22.98

Source: Port of Saipan, Commonwealth Ports Authority (CPA)

*Note: Others include Food, Construction Materials & Beverages for CY 2004 - 2005

**1st & 2nd Qrt Figures Adjusted to reflect latest adjusted figures

FIGURE 10 - IMPORTS (IN THOUSANDS)

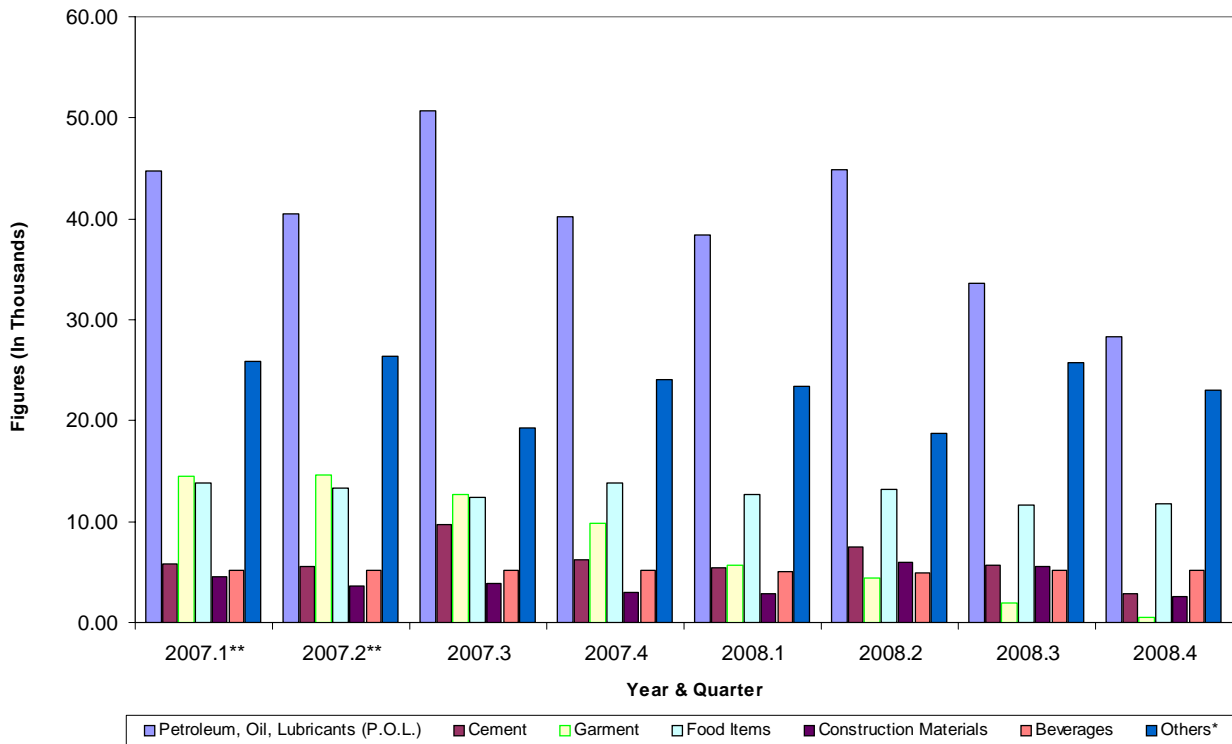


TABLE 11 - EXPORTS

Exports	Year				Quarter							
	2004	2005	2006	2007	2007.1	2007.2	2007.3	2007.4	2008.1	2008.2	2008.3	2008.4
Garment Exports Value (US \$ Millions)*	826.00	650.80	486.50	307.57	101.89	76.76	71.62	57.30	47.54	25.24	15.70	9.73
% Change to Previous Year/Quarter	4.28%	-21.21%	-25.25%	-36.78%	-19.01%	-38.79%	-43.16%	-47.58%	-53.34%	-67.11%	-78.07%	-83.02%
% Change to Previous Quarter					-6.78%	-24.66%	-6.70%	-20.00%	-17.03%	-46.90%	-37.79%	-38.04%

Source: Department of Finance

*Note: Estimated Based on Garment Certification Fee Collection

FIGURE 11 - EXPORTS (IN MILLIONS)

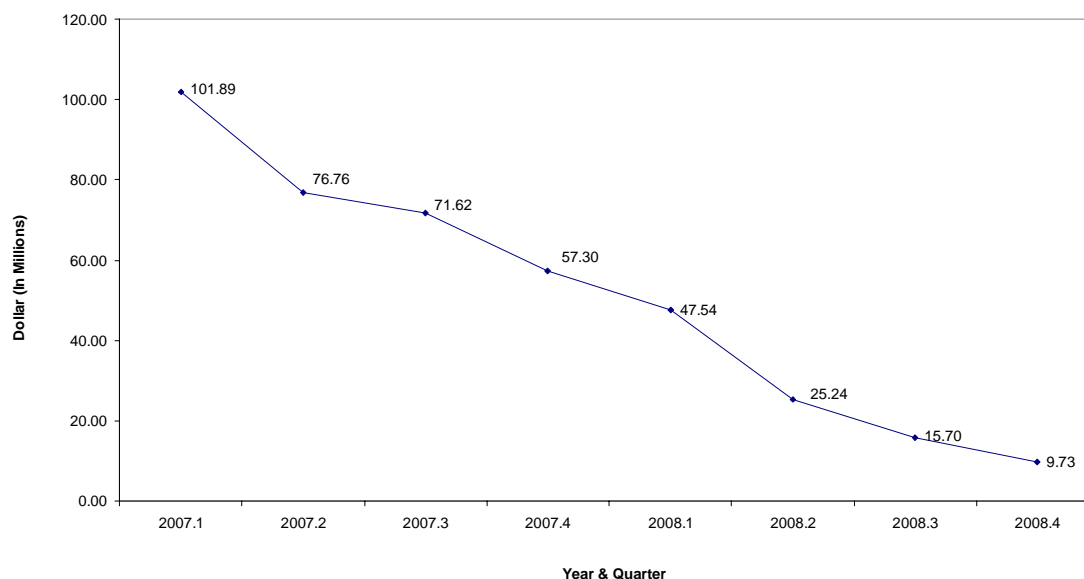


TABLE 12 - TELEPHONE LINES

Telephone Lines	Year				Quarter							
	2004	2005	2006	2007	2007.1	2007.2	2007.3	2007.4	2008.1	2008.2	2008.3	2008.4
Total Telephone Lines	31,525	31,752	30,684	28,963	29,939	29,684	29,166	28,963	28,631	29,528	29,487	30,458
% Change to Previous Year/Quarter	6.0%	0.7%	-3.3%	-5.6%	-2.2%	-4.0%	-5.7%	-5.6%	-4.4%	-0.5%	1.1%	5.2%
% Change to Previous Quarter					-2.4%	-0.9%	-1.7%	-0.7%	-1.1%	3.1%	-0.1%	3.3%
Total Commercial Phone Lines	19,722	20,551	20,592	20,001	20,108	20,135	19,986	20,001	19,845	20,867	21,033	22,155
% Change to Previous Year/Quarter	8.9%	4.2%	0.19%	-2.9%	2.4%	-0.4%	-3.0%	-2.9%	-1.3%	3.6%	5.2%	10.8%
% Change to Previous Quarter					-2.4%	0.1%	-0.7%	0.1%	-0.8%	5.1%	0.8%	5.3%
Saipan	10,920	10,668	9,737	8,689	9,276	9,064	8,813	8,689	8,552	8,474	8,285	8,238
Tinian	450	435	387	376	378	373	371	376	381	372	362	366
Rota	489	466	428	410	427	420	408	410	395	395	388	385
Special Access	7,863	8,982	10,040	10,526	10,027	10,278	10,394	10,526	10,517	11,626	11,998	13,166
Total Residential Phone Lines	11,803	11,201	10,092	8,962	9,831	9,549	9,180	8,962	8,786	8,661	8,454	8,303
% Change to Previous Year/Quarter	1.4%	-5.1%	-9.90%	-11.2%	-10.4%	-10.9%	-11.2%	-11.2%	-10.6%	-9.3%	-7.9%	-7.4%
% Change to Previous Quarter					-2.6%	-2.9%	-3.9%	-2.4%	-2.0%	-1.4%	-2.4%	-1.8%
Saipan	10,734	10,178	9,096	8,045	8,840	8,578	8,237	8,045	7,896	7,756	7,550	7,414
Tinian	531	499	492	458	495	485	473	458	443	448	450	439
Rota	538	524	504	459	496	486	470	459	447	457	454	450

Source: Pacific Telecommunication Incorporated (PTI)

FIGURE 12.1 - COMMERCIAL PHONE LINES

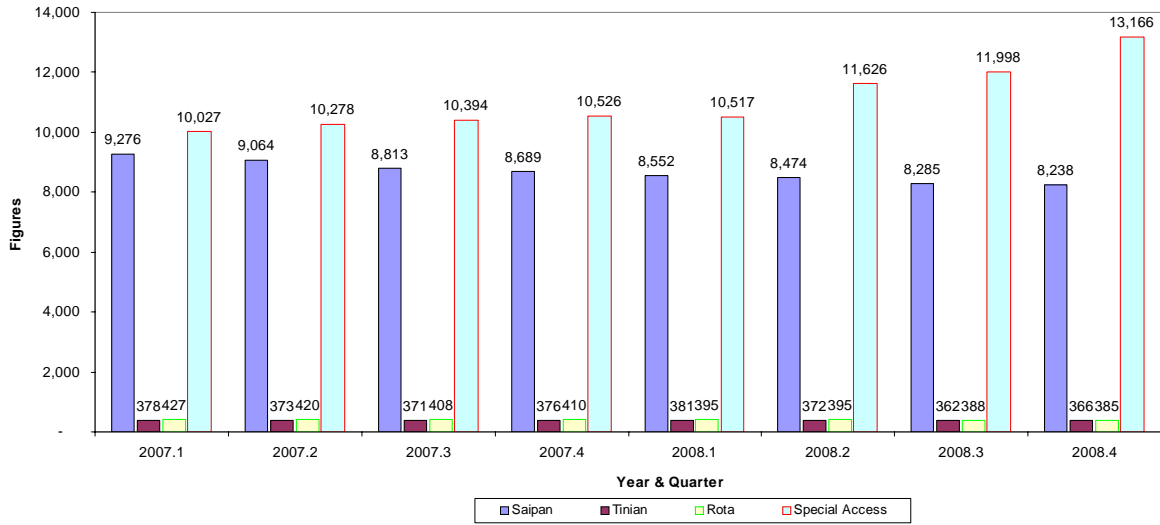


FIGURE 12.2 - RESIDENTIAL PHONE LINES

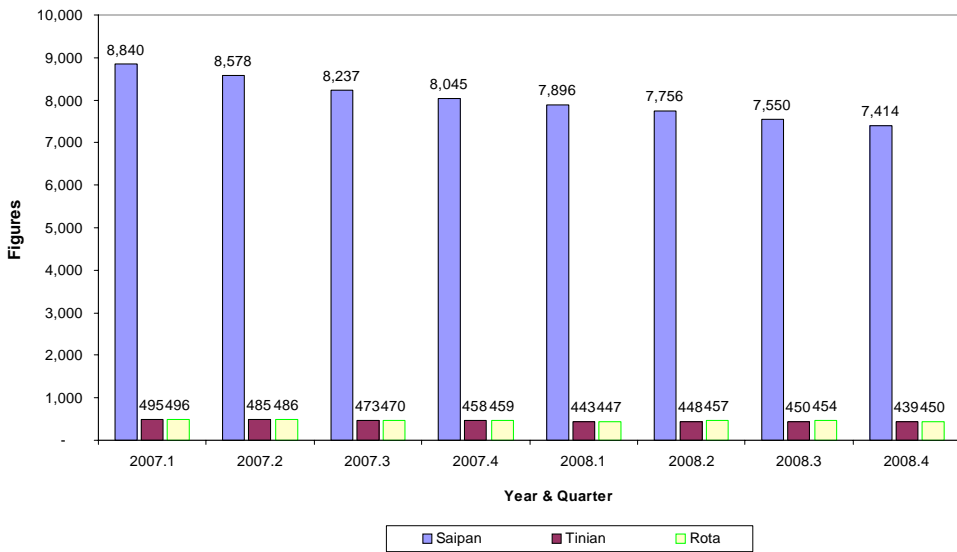


FIGURE 12.3 - COMMERCIAL & RESIDENTIAL PHONE LINES (TOTALS)

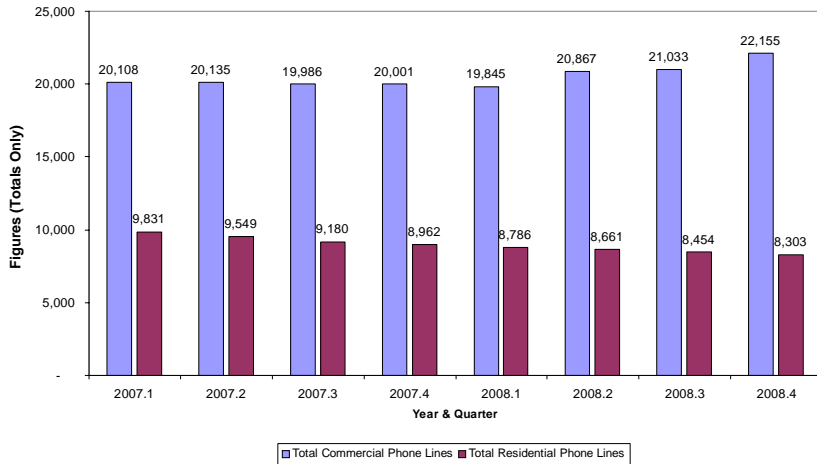


TABLE 13 - BUILDING PERMITS

CNMI Building Permits Issued	Year					Quarter							
	2003	2004	2005	2006	2007	2007.1	2007.2	2007.3	2007.4	2008.1	2008.2	2008.3	2008.4
Total No. of Permits	323	352	350	292	255	64	71	56	64	57	57	56	43
No. of Commercial	163	157	164	125	121	21	35	30	35	31	24	24	27
No. of Residential	160	195	186	167	120	43	36	19	22	25	26	32	15
No. of Government*					14			7	7	1	7	0	1
Total Value (US \$ Millions)	15.55	23.05	28.89	11.79	16.23	4.3	3.0	4.5	4.4	4.9	12.3	14.8	12.0
Commercial	9.55	11.47	19.94	3.59	9.0	2.5	1.8	3.23	1.51	3.06	9.33	12.76	11.25
Residential	6.00	11.58	8.95	7.74	5.1	1.8	1.3	0.86	1.10	1.59	0.75	2.00	0.77
Government*					2.2			0.37	1.84	0.30	2.18	-	-

Source: Building Safety Code Division, Department of Public Works
 *Recent Addition to EI 3rd Qtr 2007

FIGURE 13.1 - NUMBER OF BUILDING PERMITS ISSUED

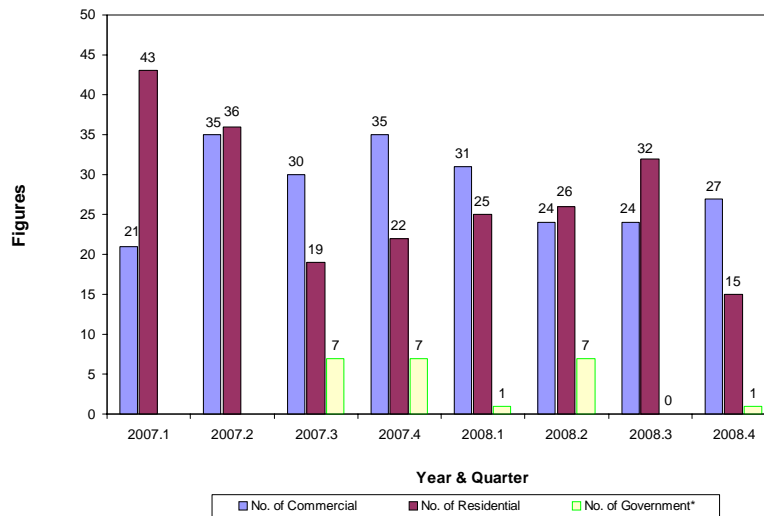


FIGURE 13.2 - VALUES OF BUILDING PERMITS ISSUED (IN MILLIONS)

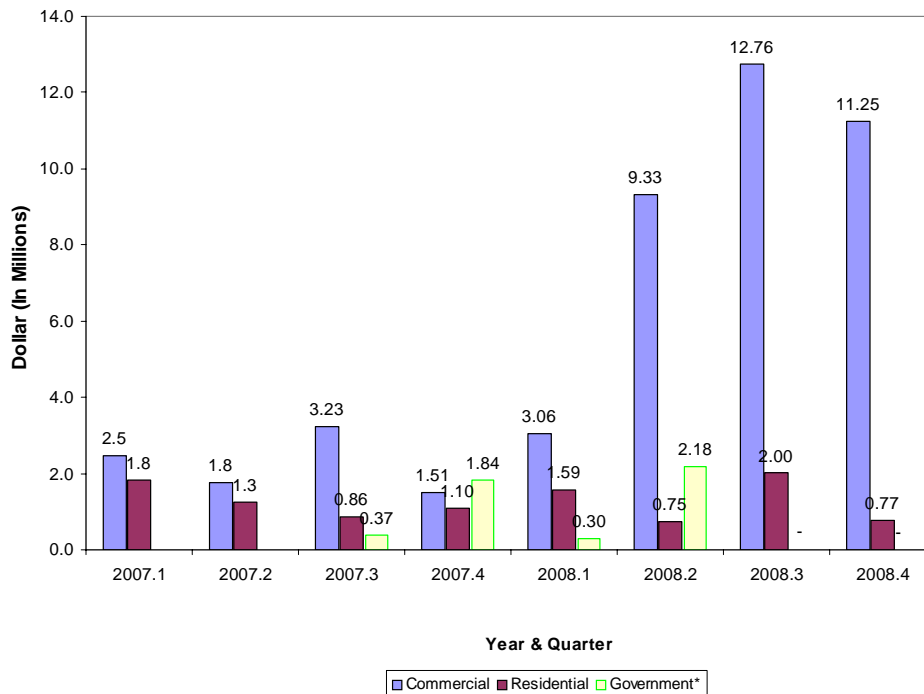


TABLE 14 - CNMI CONSUMER PRICE INDEX (CPI)
COMMONWEALTH OF THE NORTHERN MARIANA ISLANDS
1st Quarter 2003 = 100

Groups	4th Qtr 2008	3rd Qtr 2008	4th Qtr 2007	To 4th Qtr 08 fm 3rd Qtr 08	To 4th Qtr 08 fm 4th Qtr 07
All Items	120.5	120.2	114.1	0.3	6.4
Food	118.8	116.1	107.4	2.7	11.4
Alcoholic Beverages	104.3	103.5	104.3	0.8	0.0
Housing and Utilities	152.7	159.3	144.9	-6.6	7.8
Apparel	101.4	100.8	102.3	0.6	-0.9
Transportation	104.5	96.5	100.0	8.0	4.5
Medical Care	108.1	104.5	101.1	3.6	7.0
Recreation	98.1	98.1	101.0	0.0	-2.9
Education and Communication	101.3	100.8	100.6	0.5	0.7
Other Goods and Services	107.7	107.7	100.0	0.0	7.7

Source: Central Statistics Division, Department of Commerce

TABLE 15 - CNMI CONSUMER PRICE FOR 9 SELECTED GROUPS
COMMONWEALTH OF THE NORTHERN MARIANA ISLANDS
1st Quarter 2003 = 100

Year & Quarter	All Items	Food	Alcoholic Beverages	Housing Utilities	Apparel	Transportation	Medical Care	Recreation	Education and Communication	Other Goods & Services
2003.1	100.0	100.0	100.0	100.0	100.0	100.0	100.0	100.0	100.0	100.0
2003.2	99.9	100.3	100.2	100.0	100.2	99.7	100.0	99.3	99.8	100.0
2003.3	99.8	100.7	100.0	99.2	101.0	99.7	100.0	99.1	100.2	100.0
2003.4	99.6	100.5	99.9	97.9	100.5	100.5	100.0	96.3	99.6	100.0
2004.1	100.2	103.1	99.9	98.3	100.9	100.5	100.0	95.6	99.5	100.0
2004.2	100.9	104.1	99.7	97.7	99.8	100.9	100.0	101.5	99.6	108.3
2004.3	100.5	105.2	100.1	97.4	95.5	100.0	100.0	98.9	98.7	108.3
2004.4	101.2	107.4	99.9	98.0	92.6	100.2	100.0	98.6	100.9	108.3
2005.1	101.3	106.9	100.0	98.2	98.0	100.6	100.0	98.8	98.0	108.3
2005.2	101.6	107.7	101.3	98.3	96.6	100.7	100.0	101.5	98.4	108.3
2005.3	100.2	100.4	100.4	100.1	96.3	100.3	100.1	99.6	101.4	100.0
2005.4	100.6	99.6	100.1	102.2	99.5	100.0	99.8	100.8	101.1	100.0
2006.1	101.3	101.0	100.4	101.5	114.0	100.3	106.5	103.0	100.8	100.0
2006.2	100.3	100.2	100.0	101.0	100.5	100.0	100.0	100.7	100.0	100.0
2006.3	111.3	101.3	100.0	139.7	100.5	100.0	100.0	102.2	100.1	100.0
2006.4	111.7	102.3	100.0	140.5	100.3	100.0	100.0	99.1	100.5	100.0
2007.1	112.4	104.9	103.9	140.9	101.8	100.0	100.0	100.3	100.8	100.0
2007.2	113.7	106.2	103.9	144.5	102.1	100.0	101.1	100.4	100.6	100.0
2007.3	113.8	106.5	103.9	144.6	102.3	100.0	101.1	100.8	100.6	100.0
2007.4	114.1	107.4	104.3	144.9	102.3	100.0	101.1	101.0	100.6	100.0
2008.1	114.1	112.0	106.4	141.0	102.4	100.0	107.9	102.4	100.5	100.0
2008.2	120.9	112.4	107.2	161.6	101.3	103.2	107.9	99.8	100.5	100.0
2008.3	120.2	116.1	103.5	159.3	100.8	96.5	104.5	98.1	100.8	107.7
2008.4	120.5	118.8	104.3	152.7	101.4	104.5	108.1	98.1	101.3	107.7

Source: Central Statistics Division, Department of Commerce

TABLE 16 - HISTORICAL CPIs FOR SELECTED GROUPS

COMMONWEALTH OF THE NORTHERN MARIANA ISLANDS
1st Quarter 2003 = 100

Year & Quarter	Food	Alcoholic Beverages	Housing Utilities	Apparel	Transportation	Medical Care	Recreation	Education Communication	Other Goods & Services	All Items
Wgts	19.02	1.72	27.73	2.24	33.52	2.36	2.44	5.68	5.30	100.0
2000.1	111.3		103.1	108.5	97.0	84.3				99.3
2000.2	110.1		103.5	107.4	99.1	92.5				101.8
2000.3	112.2		104.7	107.9	101.4	93.1				103.2
2000.4	109.0		100.7	108.0	101.4	92.6				101.4
2001.1	106.0		101.3	108.0	101.2	92.2				100.3
2001.2	107.3		101.2	107.5	100.6	92.2				100.6
2001.3	106.7		104.2	107.5	100.2	92.1				100.8
2001.4	107.7		102.3	108.4	98.8	91.9				100.7
2002.1	106.0		102.8	107.2	99.5	97.9				102.2
2002.2	103.7		98.4	107.9	101.0	97.6				100.8
2002.3	102.3		101.3	107.7	101.0	97.7				100.8
2002.4	99.6		100.3	101.5	101.2	97.7				99.4
2003.1	100.0	100.0	100.0	100.0	100.0	100.0	100.0	100.0	100.0	100.0
2003.2	100.3	100.2	100.0	100.2	99.7	100.0	99.3	99.8	100.0	99.9
2003.3	100.7	100.0	99.2	101.0	99.7	100.0	99.1	100.2	100.0	99.8
2003.4	100.5	99.9	97.9	100.5	100.5	100.0	96.3	99.6	100.0	99.6
2004.1	103.1	99.9	98.3	100.9	100.5	100.0	95.6	99.5	100.0	100.2
2004.2	104.1	99.7	97.7	99.8	100.9	100.0	101.5	99.6	108.3	100.9
2004.3	105.2	100.1	97.4	95.5	100.0	100.0	98.9	98.7	108.3	100.5
2004.4	107.4	99.9	98.0	92.6	100.2	100.0	98.6	100.9	108.3	101.2
2005.1	106.9	100.0	98.2	98.0	100.6	100.0	98.8	98.0	108.3	101.3
2005.2	107.7	101.3	98.3	96.6	100.7	100.0	101.5	98.4	108.3	101.6
2005.3	100.4	100.4	100.1	96.3	100.3	100.1	99.6	101.4	100.0	100.2
2005.4	99.6	100.1	102.2	99.5	100.0	99.8	100.8	101.1	100.0	100.6
2006.1	101.0	100.4	101.5	114.0	100.3	106.5	103.0	100.8	100.0	101.3
2006.2	100.2	100.0	101.0	100.5	100.0	100.0	100.7	100.0	100.0	100.3
2006.3	101.3	100.0	139.7	100.5	100.0	100.0	102.2	100.1	100.0	111.3
2006.4	102.3	100.0	140.5	100.3	100.0	100.0	99.1	100.5	100.0	111.7
2007.1	104.9	103.9	140.9	101.8	100.0	100.0	100.3	100.8	100.0	112.4
2007.2	106.2	103.9	144.5	102.1	100.0	101.1	100.4	100.6	100.0	113.7
Year & Quarter	Food	Alcoholic Beverages	Housing Utilities	Apparel	Transportation	Medical Care	Recreation	Education Communication	Other Goods & Services	All Items
Wgts	19.02	1.72	27.73	2.24	33.52	2.36	2.44	5.68	5.30	100.0
2007.3	106.5	103.9	144.6	102.3	100.0	101.1	100.8	100.6	100.0	113.8
2007.4	107.4	104.3	144.9	102.3	100.0	101.1	101.0	100.6	100.0	114.1
2008.1	112.0	106.4	141.0	102.4	100.0	107.9	102.4	100.5	100.0	114.1
2008.2	112.4	107.7	161.6	101.3	103.2	107.9	99.8	100.5	100.0	120.9
2008.3	116.1	103.5	159.3	100.8	96.5	104.5	98.1	100.8	107.7	120.2
2008.4	118.8	104.3	152.7	101.4	104.5	108.1	98.1	101.3	107.7	120.5

1 The previous Consumer Price Index had only 5 major groups rather than the 9 that are in the revised CPI. Nevertheless, these historical CPIs will provide users with some indication of historical price movement of the CPI.

Source: Central Statistics Division, Department of Commerce

LIST OF CONTRIBUTORS

Agency		Contact Number
Commonwealth Auto-Dealer Association	CADA	234-5911
Commonwealth Ports Authority	CPA	664-3555/3553
Department of Commerce	DOC	664-3044/3023
Department of Finance	DOF	664-1186
Department of Public Works	DPW	235-5827/9570
Hotel Association of Northern Mariana Islands	HANMI	233-3773/6964
Marianas Visitor Authority	MVA	664-3230
Pacific Telecommunication Incorporated	PTI	682-2612